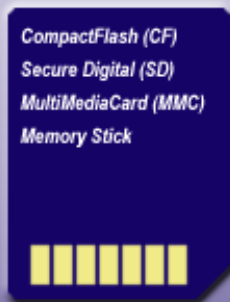


BLUESYNC™



©2007 Blue Squirrel, All Rights Reserved

BlueSync for Palm OS

For Windows 95/98/ME/2000/XP/2003 and Palm OS

User's Guide

BlueSync Help File

© 2007 Blue Squirrel

All rights reserved. No parts of this work may be reproduced in any form or by any means - graphic, electronic, or mechanical, including photocopying, recording, taping, or information storage and retrieval systems - without the written permission of the publisher.

Products that are referred to in this document may be either trademarks and/or registered trademarks of the respective owners. The publisher and the author make no claim to these trademarks.

While every precaution has been taken in the preparation of this document, the publisher and the author assume no responsibility for errors or omissions, or for damages resulting from the use of information contained in this document or from the use of programs and source code that may accompany it. In no event shall the publisher and the author be liable for any loss of profit or any other commercial damage caused or alleged to have been caused directly or indirectly by this document.

Printed: November 2006

Information in this document is subject to change without notice and does not represent a commitment on the part of Blue Squirrel. The software described herein, including all associated documentation and data, is the exclusive property of Blue Squirrel or its suppliers and is furnished only under a license agreement defining the terms and conditions governing its use by licensee. It is against the law to copy the software except as specifically allowed in the license agreement. No part of this document may be reproduced or transmitted in any form or by any means, including without limitation graphic, electronic, photocopy, facsimile, taping or mechanical reproduction of any kind without the prior written approval of Blue Squirrel.

Use of this product is subject to the terms of the accompanying License Agreement as stated in the back of this book.

U.S. Government Restricted Rights Legend

The Software and documentation are provided with RESTRICTED RIGHTS. Use, duplication, or disclosure by the Government is subject to restrictions as set forth in subparagraph (c) (1) of the Rights in Technical Data and Computer Software clause at DFARS 52.277-7013 or in subparagraph (c) (1) (ii) and (20) of Commercial Computer Software-Restricted Rights at 48 CFR 52.227-19, as applicable. Contractor/manufacturer is Blue Squirrel Software, 686 E. 8400 South, Sandy, UT 84070.

Special thanks to:

All the people that contributed to the development of Blue Squirrel's BlueSync, including the developers, copywriters, web site developers, technical support, customer service, manual editors, alpha testers, and the beta testers.

Table of Contents

Foreword	0
Part I Introduction	2
Part II Basics	2
Part III Automatic Update	4
Part IV Interface	4
Part V Conduit Interface	4
Part VI PC Desktop Interface	6
Part VII Exceptions	7
Part VIII Palm OS Interface	8
Part IX Advanced	9
Part X Troubleshooting	9
Part XI Support	10
Part XII License	10
Index	13

1 Introduction

Quick and easy synchronization Palm card(s) with your PC

BlueSync™ will synchronize your SD cards, MMC cards, Compact Flash, or Memory Sticks with directories on your PC. This makes it simple to add programs and data to your card. You can also easily add music files and photographs to your handheld card. It is difficult to add, remove and organize your files using a third-party card file manager program (not included with Palm OS). With BlueSync, you can use your PC to organize the directories, and files and then just hit HotSync.

BlueSync™ can also be used to transfer files to/from work and home. While this used to be done with Zip disks and other removable storage, now you can add files to a directory and HotSync to take them with you at work. HotSync again when you get home, edit the files, and HotSync when you get back to work. BlueSync™ will make sure the newest file is used every time.

2 Basics

Synchronizing

To synchronize a card with your PC, just make sure that the card is in your handheld and hit the HotSync button. During the HotSync, a dialog box will pop up and let you know that BlueSync™ is analyzing your card. The first time you HotSync, it will take more time as all the files need to be copied. Subsequent HotSyncs will not take as long, and only the files that need to be copied will be transferred.

Synchronizing Files to Palm with BlueSync™

To add files to your Palm, simply copy them into the correct directory on the PC. BlueSync™ comes with a helper application on the PC to help you find the correct directory on your PC. You can launch the helper application by going to Start->Programs->Blue Squirrel->BlueSync.

The BlueSync™ helper application will show all the Palm Users on your system. In most cases, there is only one.

Use these steps to add files to your handheld with BlueSync™:

1. Choose the Palm User for your Palm. The Palm User is the same as the HotSync Id. You can find this on your Palm by launching the HotSync application on your Palm and looking at the Id in the upper right-hand corner.
2. Choose the card you will HotSync with. BlueSync will handle multiple cards.
3. Hit the browse button. Add a file to the folder with Copy/Paste or save a file to that location.
4. HotSync. BlueSync will recognize that there is a new file on the PC that isn't on the card, and it will add it to the Palm card.

Synchronizing Files to PC with BlueSync™

There are several ways to get files onto your handheld card:

1. You can use the Copy... option from the menu in your Palm application launcher. This will copy Palm databases to \PALM\Launcher and that is all. This is a very limited function.
2. You can use the Install Tool to install databases to the card. This too will add files to

\PALM\Launcher.

3. You can use a camera that supports MMC/SD/Memory Stick or Compact Flash and take some pictures. These pictures are often (not always) stored in the \DCIM directory of the card.
4. You can use one of the many card file managers that are available to move files from main memory to the card.
5. You can use Launcher helper applications such as PowerRUN to move files from main memory to the card.
6. You can use utilities that convert files to and from PC formats to Palm formats to move files to the card.

Once you have moved files to the card using one of the methods listed above, you can hit HotSync to synchronize the PC directory with the Palm. The files that you added, or moved on the Palm will be added or moved in the PC directory.

Collisions

It is possible during synchronization that the same file will have been modified on the PC and on the handheld. BlueSync takes two steps to correct for this condition:

1. BlueSync will do a binary comparison on the file. If they are identical, then BlueSync will choose only one of them and Synchronize on the PC and handheld.
2. If the files are not identical, then BlueSync will make a copy of the least recently changed file and rename it by appending "_2" or "_3" as needed to make it unique and synchronize it to both the handheld card and the PC directory.

Archiving Deleted Files

BlueSync has the ability to save a copy of the files that you delete. Remember that if you delete files from the PC directory, they will be deleted from the Palm on the next HotSync. If you set "Archive Deleted Files" then BlueSync will keep a copy on the PC in the "Archive\BlueSync" directory. You can set this flag by right-clicking on the HotSync application in the tray and then choosing "Custom...", choosing BlueSync and then checking the "Archive Deleted Files" button.

Backup

If you do not want to use the synchronization capabilities of BlueSync, you may still want to back up your card(s) for safekeeping. You can force the directory on the PC to be an exact copy of the Palm card. To do this, set the "Handheld overwrites desktop" option. You can set this by right-clicking on the HotSync application in the tray and then choose "Custom...", then select "BlueSync" from the list of conduits and hit "Change...", then choose "Handheld overwrites desktop". If you want to repeatedly back up your card, you will also need to mark "Set as default."

Restore

If you want the card to be exactly like the directory, then you can force the card to be an exact copy of PC directory. To do this, set "Desktop overwrites handheld." You can set this by right clicking on the HotSync application in the tray and then choosing "Custom...", then select "BlueSync" from the list of conduits and hit "Change...", then select "Desktop overwrites handheld."

3 Automatic Update

InstantUpdate

BlueSync™ has the ability to update itself over the Internet. From the BlueSync Desktop application – hit the Update Now button. to download the newest version.

InstantX Settings

You can have BlueSync™ check for updates every time it runs, once a day, or once a week. To change the settings, click on the icon in the upper left-hand corner. Update > Settings > InstantX Update. Then you can specify how frequently to check for updates. We recommend once a day or once every seven days.

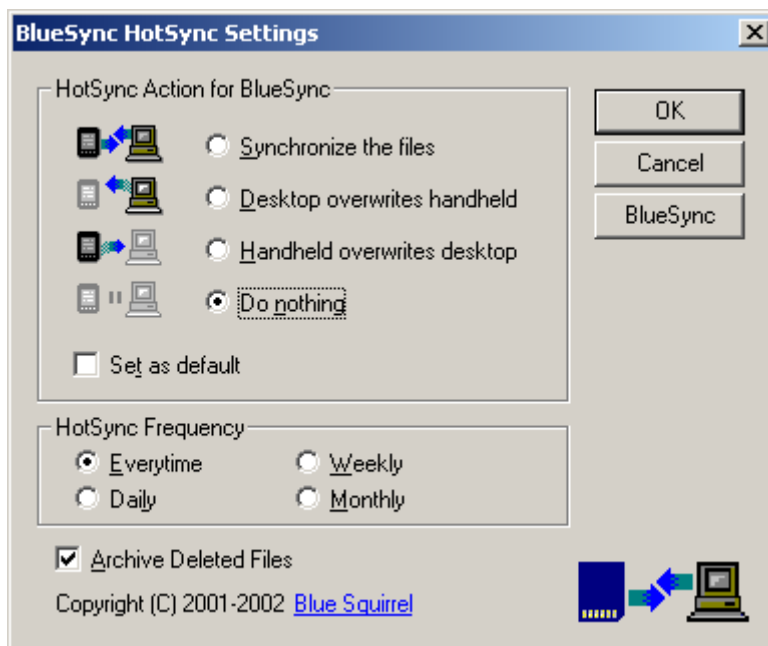
4 Interface

BlueSync™ has three parts:

- 1) [BlueSync Conduit](#) - Runs inside the Palm OS HotSync application.
- 2) [BlueSync Desktop](#) - Runs on your PC, and provides an interface to view the directories with which your card(s) will synchronize.
- 3) [BlueSync Palm OS application](#) - Runs on your Palm OS handheld and works with the conduit to perform the synchronization.

5 Conduit Interface

The BlueSync™ Conduit does the actual synchronization when you HotSync. The HotSync application runs the conduit.



To launch this dialog box, right-click on the HotSync icon and choose BlueSync and then hit "Change..."

Synchronize the files – This is the default setting. The files will be synchronized between the PC directory and the handheld's card.

Desktop overwrites handheld – This setting will make the handheld's card look exactly like the PC's directory. This could be considered a restore, if you are using BlueSync™ for backup/restore.

Handheld overwrites desktop – This setting will make the PC directory look exactly like the handheld's card. This is a backup, if you are using BlueSync™ for backup/restore.

Do nothing – This setting keeps the conduit from running. You may want to use this option if you are concerned about the amount of time it takes to HotSync. BlueSync™ can add up to several minutes to a HotSync operation depending on the number of files that you have on your handheld.

Set as default – You must select this option if you want the Action setting to stick. If you do not set this option, then it will only do the selected action during one HotSync and then it will revert back to its previous setting.

HotSync Frequency - You may specify how often BlueSync will synchronize your card with your PC. This is useful if you do frequent backups to your card, but you don't want to wait every time for BlueSync to copy those files to the PC. On the Handera, it will still analyze all the files prior to HotSync.

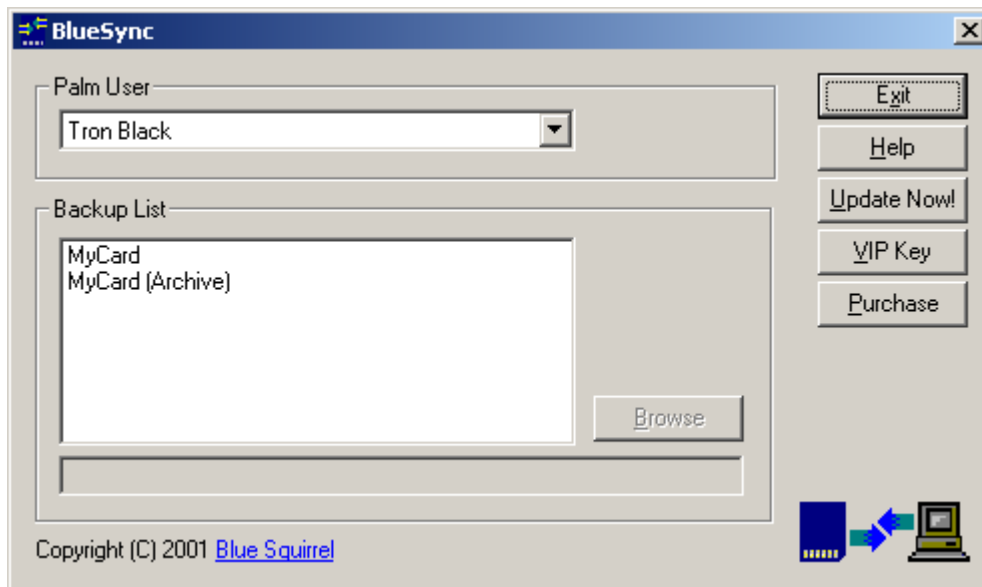
- **Everytime** - Every time you HotSync. This is the default.
- **Daily** - Once a day. If 24 hours have gone by since the last HotSync, then it will synchronize the card.
- **Weekly** - If 7 days (168 hours) have gone by since the last card sync, then it will synchronize the card.
- **Monthly** - If 30 days (720 hours) have gone by since the last card sync, then it will synchronize the card.

Archive Deleted Files – This option will copy any deleted files to <palm user dir>\Archive\BlueSync\<card>\

BlueSync Button – This launches the desktop application. The desktop application lets you browse the directories where BlueSync™ is storing the files.

6 PC Desktop Interface

BlueSync Desktop (on the PC)



Palm User – This is the user account for the program to display all the cards that have been HotSynced with BlueSync™.

Backup List – This lists all the cards for which you have a corresponding PC directory. The first time you HotSync with a card installed, it will show up in this list.

Exceptions - This allows you choose certain directories on your card that you would like ignored, or synchronized differently than the default. You might use this if you have a large Music collection on your card that doesn't change often and you would like it to be ignored to speed up the HotSync process. Or perhaps you have some files that are synchronized by another conduit and would like to save the time during the HotSync process.

Browse – This button will launch the Windows Explorer with the displayed directory. You will not see anything until you have done a HotSync with at least one card. If you have turned on "Archive", you will see the directory for your card and an (Archive) directory which contains any deleted or removed files.

Exit – This closes the program.

Help – This launches the help file. The help file has the same information as this manual. If you can't find what you are looking for in the help file, you may visit our support options. See the support section for more information.

Update Now! – This button checks with the Blue Squirrel site to determine if there has been an update to the program. If there isn't an update, it will tell you that you have the latest version of the program. If there is an update, you will be given the option to update the software.

VIP Key – This option allows you enter the VIP Key that you receive when you purchase the program. This button will disappear after you have purchased the program and entered a VIP Key. You may need to restart the program for the button to disappear.

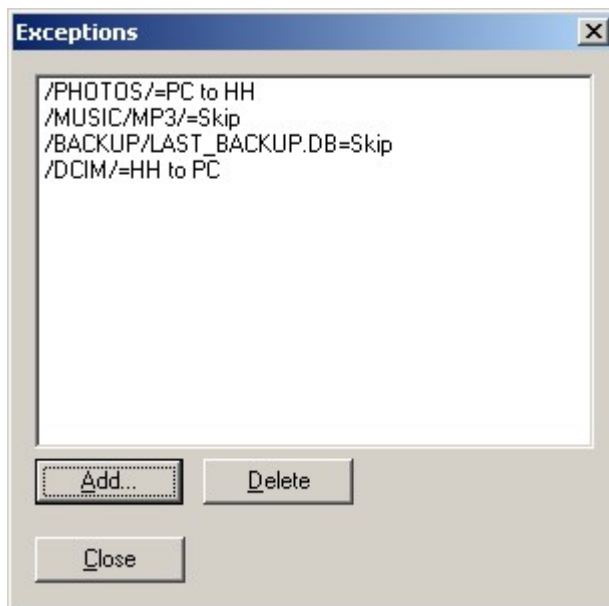
Purchase – This button takes you to the Blue Squirrel web site where you may purchase the program. This button will disappear after you have purchased the program and entered a VIP Key. You may need to restart the program for the button to disappear.

About BlueSync... – You can click on the icon in the upper left-hand corner to get this option. About will show you who the program is licensed to, copyright information and contact information for Blue Squirrel.

Update -> Undo Last Update... – This option can be accessed by clicking on the icon in the upper left-hand corner of the program. This will undo an update if the update had any unintended side effects.

Update -> Update Settings... – This option can be accessed by clicking on the icon in the upper left-hand corner of the program. This option will let you specify how often (if at all) to check for an update on the Internet. The default is to check no more than once a day when you use the program.

7 Exceptions



You can add Exceptions which modifies the synchronization method for either files or directories.

For directories, be sure to add a / (forward slash) at the end of the directory name.

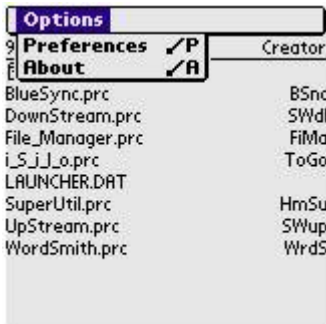
For files, include the entire path beginning with a / (forward slash) and ending with the name of the file.

All sub-directories of a directory will be affected. Example: Choosing to "Skip" the directory /MUSIC/ will also skip /Music/MyBand/Ice.mp3

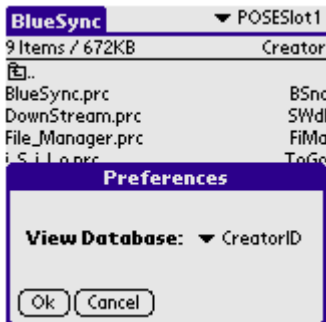
8 Palm OS Interface

The Palm OS application is required for BlueSync to work. The application performs a part of the synchronization.

The Palm OS application also works as a handheld card browser. You can navigate, view, delete and rename files on the card.




Preferences – This lets you show size, Type, or Creator ID in the browse list.



About – Shows information about BlueSync™, including the version number and contact information for Blue Squirrel.



Navigation

To navigate the file system, you can click on the folders to view the contents of the folder. To move back up a folder, click on the  icon.

Deleting Files

To delete a file, click on the file and then hit the "Delete..." button. BlueSync will ask you to confirm that you would like to delete the file. Once a file has been deleted from the handheld, it will be deleted from the PC directory upon the next HotSync (provided that you have the conduit set to Synchronize). If you have "Archive Deleted Files" set then a copy of the deleted file will be stored in the archive directory on the PC.

Special Files

Palm Inc. has set aside some special directories on the card. BlueSync™ the Palm OS application has an easy shortcut method for viewing these special directories.

The /PALM/Launcher directory is used by the Palm Copy command. Files that are copied using the Palm OS utility are stored in this directory. Choosing <card>-Launcher from the drop-down in the upper right-hand corner will allow you to view this directory.

The /DCIM directory is set aside for cameras. Many cameras will store their images in the DCIM directory. Choosing <card>-Image/Video from the upper right-hand corner will allow you to view this directory.

The /AUDIO directory has been reserved for music and audio files. Choosing <card>-Audio from the upper right-hand corner will allow you to view this directory.

9 Advanced

BlueSync is a very sophisticated program with the ability to fully synchronize your card with a directory on your computer. The full synchronization includes the ability to intelligently handle collisions, do binary comparisons when necessary, and [ignore certain directories or files](#). It is designed to perfectly mirror the built-in synchronization that the Palm OS provides for the main memory, but for your external memory cards.

Change Location of PC Directory

The default location is <palm desktop software location>\<hotsync location>\BlueSync\<card name>. You may modify the location of backups by editing the BlueSync.INI in the program directory. At this time, you can modify the directory per card, and not per directory.

Additional Backups

One easy way to make additional backups of your card is to rename the card and HotSync. BlueSync™ will recognize the renamed card as a new card and create a completely new PC directory for your card.

10 Troubleshooting

In almost every case, BlueSync works flawlessly and you only need to hit the HotSync button. If the program is not working as expected, here are some potential problems.

Card Not Named - BlueSync requires your card to have a volume name. If you haven't named your card, go to your CardInfo program on you HandHeld and name your card. Then hit HotSync again.

Conduit Not Installed - BlueSync automatically installs the conduit during the installation process. If you've changed computers, or the location of your Palm Desktop Software, then you may need to install the conduit again. Run "BLUESYNC.EXE -u" to uninstall the conduit and then run "BLUESYNC.EXE -i" to install conduit.

Other Problems - If BlueSync encounters problems during the HotSync, then they will be recorded in the HotSync log on the PC. Right-click on the HotSync icon on the PC and choose "View Log..." to see the problem. If you are unable to solve the problem yourself, please contact our [technical support](#).

11 Support

Blue Squirrel's Support and Knowledge Base:

<http://www.bluesquirrel.com/support/>

12 License

THE BLUE SQUIRREL END USER LICENSE AGREEMENT REDISTRIBUTION NOT PERMITTED

GRANT. Subject to payment of applicable license fees, Blue Squirrel grants you a non-exclusive license to use the Software and accompanying documentation ("Documentation") in the manner described below under "Scope of Grant."

SCOPE OF GRANT

You may:

- use the Software on any single computer;
- use the Software on a network, provided that each person accessing the Software through the network must have a copy licensed to that person;
- use the Software on a second computer so long as only one copy is used at a time;
- copy the Software for archival purposes, provided any copy must contain all of the original Software's proprietary notices; or
- if you have purchased licenses for a 10 Pack or a 50 Pack, make up to 10 or 50 copies, respectively, of the Software (but not the Documentation), provided any copy must contain all of the original Software's proprietary notices. The number of copies is the total number of copies that may be made for all platforms. Additional copies of Documentation may be purchased.

You may not:

- permit other individuals to use the Software except under the terms listed above;
- permit concurrent use of the Software;
- modify, translate, reverse engineer, decompile, disassemble (except to the extent applicable laws specifically prohibit such restriction), or create derivative works based on the Software;
- copy the Software other than as specified above;
- rent, lease, grant a security interest in, or otherwise transfer rights to the Software; or
- remove any proprietary notices or labels on the Software.

LIMITED WARRANTY.

Blue Squirrel warrants that for a period of ninety (90) days from the date of acquisition, the Software, if operated as directed, will substantially achieve the functionality described in the Documentation. Blue Squirrel does not warrant, however, that your use of the Software will be uninterrupted or that the operation of the Software will be error-free or secure. In addition, you must determine that the Software sufficiently meets your requirements. Blue Squirrel also warrants that the media containing the Software, if provided by Blue Squirrel, is free from defects in material and workmanship and will so remain for ninety (90) days from the date you acquired the Software. Blue Squirrel's sole liability for any breach of this warranty shall be, in Blue Squirrel's sole discretion; (i) to replace your defective media; or (ii) to advise you how to achieve substantially the same functionality with the Software as described in the Documentation through a procedure different from that set forth in the Documentation; or (iii) if the above remedies are impracticable, to refund the license fee paid for the Software. Repaired, corrected, or replaced Software and Documentation shall be covered by this limited warranty

for the period remaining under the warranty that covered the original Software, or if longer, for thirty (30) days after the date (a) of shipment to you of the repaired or replaced Software, or (b) Blue Squirrel advised you how to operate the Software so as to achieve the functionality described in the Documentation. Only if you inform Blue Squirrel of your problem with the Software during the applicable warranty period and provide evidence of the date you purchased a license to the Software will Blue Squirrel be obligated to honor this warranty. Blue Squirrel will use reasonable commercial efforts to repair, replace, advise or, refund pursuant to the foregoing warranty within 30 days of being so notified. IF THE SOFTWARE IS INCLUDED AS PART OF A LARGER BUNDLE, SOME OF THESE REMEDIES MAY NOT BE AVAILABLE TO YOU.

THIS IS A LIMITED WARRANTY AND IT IS THE ONLY WARRANTY MADE BY BLUE SQUIRREL. BLUE SQUIRREL MAKES NO OTHER EXPRESS WARRANTY AND NO WARRANTY OF NONINFRINGEMENT OF THIRD PARTIES' RIGHTS. THE DURATION OF IMPLIED WARRANTIES, INCLUDING WITHOUT LIMITATION, WARRANTIES OF MERCHANTABILITY AND OF FITNESS FOR A PARTICULAR PURPOSE, IS LIMITED TO THE ABOVE LIMITED WARRANTY PERIOD; SOME JURISDICTIONS DO NOT ALLOW LIMITATIONS ON HOW LONG AN IMPLIED WARRANTY LASTS, SO LIMITATIONS MAY NOT APPLY TO YOU. NO BLUE SQUIRREL DEALER, AGENT, OR EMPLOYEE IS AUTHORIZED TO MAKE ANY MODIFICATIONS, EXTENSIONS, OR ADDITIONS TO THIS WARRANTY. If any modifications are made to the Software by you during the warranty period; if the media is subjected to accident, abuse, or improper use; or if you violate the terms of this Agreement, then this warranty shall immediately be terminated. This warranty shall not apply if the Software is used on or in conjunction with hardware or software other than the unmodified version of hardware and software with which the software was designed to be used as described in the Documentation.

THIS WARRANTY GIVES YOU SPECIFIC LEGAL RIGHTS, AND YOU MAY HAVE OTHER LEGAL RIGHTS THAT VARY BY JURISDICTION.

TITLE. Title, ownership rights, and intellectual property rights in the Software shall remain in Blue Squirrel and/or its suppliers. The Software is protected by the copyright laws and treaties. Title and related rights in the content accessed through the Software is the property of the applicable content owner and may be protected by applicable law. This License gives you no rights to such content.

TERMINATION. The license will terminate automatically if you fail to comply with the limitations described herein. On termination, you must destroy all copies of the Software and Documentation.

LIMITATION OF LIABILITY. UNDER NO CIRCUMSTANCES AND UNDER NO LEGAL THEORY, TORT, CONTRACT, OR OTHERWISE SHALL BLUE SQUIRREL OR ITS SUPPLIERS OR RESELLERS BE LIABLE TO YOU OR ANY OTHER PERSON FOR ANY INDIRECT, SPECIAL, INCIDENTAL, OR CONSEQUENTIAL DAMAGES OF ANY CHARACTER INCLUDING, WITHOUT LIMITATION, DAMAGES FOR LOSS OF GOODWILL, WORK STOPPAGE, COMPUTER FAILURE OR MALFUNCTION, OR ANY AND ALL OTHER COMMERCIAL DAMAGES OR LOSSES. IN NO EVENT WILL BLUE SQUIRREL BE LIABLE FOR ANY DAMAGES IN EXCESS OF THE AMOUNT BLUE SQUIRREL RECEIVED FROM YOU FOR A LICENSE TO THE SOFTWARE, EVEN IF BLUE SQUIRREL SHALL HAVE BEEN INFORMED OF THE POSSIBILITY OF SUCH DAMAGES, OR FOR ANY CLAIM BY ANY OTHER PARTY. THIS LIMITATION OF LIABILITY SHALL NOT APPLY TO LIABILITY FOR DEATH OR PERSONAL INJURY TO THE EXTENT APPLICABLE LAW PROHIBITS SUCH LIMITATION. FURTHERMORE, SOME JURISDICTIONS DO NOT ALLOW THE EXCLUSION OR LIMITATION OF INCIDENTAL OR CONSEQUENTIAL DAMAGES, SO THIS LIMITATION AND EXCLUSION MAY NOT APPLY TO YOU.

MISCELLANEOUS. If the copy of the Software you received was accompanied by a printed or other form of "hard copy" End User License Agreement whose terms vary from this Agreement, then the hard copy End User License Agreement governs your use of the Software. This Agreement represents the complete agreement concerning this license and may be amended only by a writing executed by both parties. THE ACCEPTANCE OF ANY PURCHASE ORDER PLACED BY YOU IS EXPRESSLY MADE CONDITIONAL ON YOUR ASSENT TO THE TERMS SET FORTH HEREIN, AND NOT THOSE IN YOUR PURCHASE ORDER. If any provision of this Agreement is held to be

unenforceable, such provision shall be reformed only to the extent necessary to make it enforceable. This Agreement shall be governed by Texas law (except for conflict of law provisions). The application of the United Nations Convention of Contracts for the International Sale of Goods is expressly excluded.

U.S. GOVERNMENT RESTRICTED RIGHTS. Use, duplication or disclosure by the Government is subject to restrictions set forth in subparagraphs (a) through (d) of the Commercial Computer-Restricted Rights clause at FAR 52.227-19 when applicable, or in subparagraph (c)(1)(ii) of the Rights in Technical Data and Computer Software clause at DFARS 252.227-7013, or at 252.211-7015, and in similar clauses in the NASA FAR Supplement. Contractor/manufacturer is Blue Squirrel, 686 E. 8400 South Sandy, UT 84070.

Index

- U -

Update 4

- A -

Additional Backups 9
Advanced 4
Archiving 2

- B -

Backup 2
Backup a card 4
Basics 2

- C -

Change Location of PC Directory 9
Collisions 2

- E -

Exceptions 7

- I -

Ignore 7
Introduction 2

- L -

License Agreement 10

- R -

Restore 2

- S -

Skip 7
Support 10
Synchronizing 2